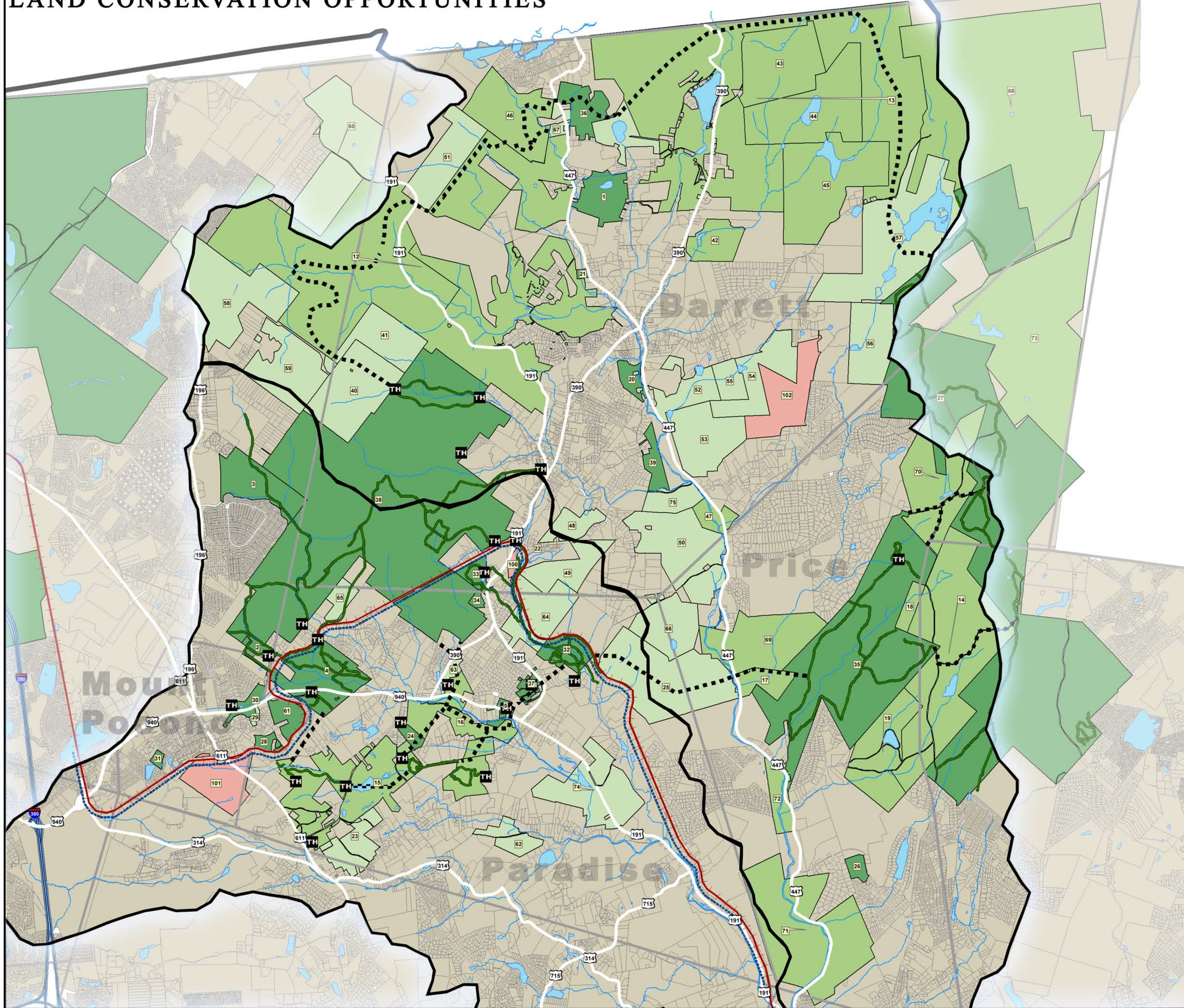


UPPER BRODHEAD & PARADISE CREEKS GREENWAY

LAND CONSERVATION OPPORTUNITIES



CONSERVED LAND

ID	OWNER	ACRES	TRAIL LENGTH	OWNERSHIP TYPE
33	ICE LAKE	65.634	0.86	PUBLIC (MUNICIPAL LANDS)
22	BARRETT TOWNSHIP	2.406		PUBLIC (MUNICIPAL LANDS)
39	NATURAL LANDS TRUST INC	87.527		PUBLIC
21	BARRETT TOWNSHIP	10.332		PUBLIC (MUNICIPAL LANDS)
36	GRAVEL PROPERTY	172.459		PUBLIC (MUNICIPAL LANDS)
1	PRICE DALE D	204.077		CONSERVATION LAND (PHLT, PARC)
27	DELAWARE STATE FOREST L	5074.691	15.73	PUBLIC (STATE LANDS)
20	BARRETT TOWNSHIP	64.029		PUBLIC (MUNICIPAL LANDS)
2	FEILD STONE (PHLT)	51.352	1.57	CONSERVATION LAND (PHLT, PARC)
3	COOLBAUGH TOWNSHIP	288.456	1.03	CONSERVATION LAND (PHLT, PARC)
31	BALLFIELD PARK	15.229		PUBLIC (MUNICIPAL LANDS)
30	FAIRVIEW WATER CO	59.946		PUBLIC (MUNICIPAL LANDS)
61	"THE LITTLE KNOB"	86.355		PRIVATE (RESIDENTIAL)
28	"THE BIG KNOB"	31.520		PUBLIC (MUNICIPAL LANDS)
38	STATE GAMLANDS 221	4494.200	11.95	PUBLIC (STATE LANDS)
4	KERMES PRESERVE	397.110	3.92	CONSERVATION LAND (PHLT, PARC)
24	KNAAF PROPERTY	35.889		PUBLIC (MUNICIPAL LANDS)
34	SEVEN PINES PARK	17.469		PUBLIC (MUNICIPAL LANDS)
32	NOTHSTEIN PROPERTY	130.537	2.93	PUBLIC (MUNICIPAL LANDS)
37	SKYWOOD PARK	46.935		CONSERVATION LAND (PHLT, PARC)
5	PARADISE TOWNSHIP	1.032		PUBLIC (MUNICIPAL LANDS)
5	PARADISE TOWNSHIP BUILDING	32.287		PUBLIC (MUNICIPAL LANDS)
26	PRICE TOWNSHIP	41.504		PUBLIC (MUNICIPAL LANDS)
35	DELEWARE STATE FOREST S	1848.793	9.06	PUBLIC (STATE LANDS)

UNPROTECTED CONSERVATION LAND

12	BUCK HILL FALLS CO	4409.293		PRIVATE (RESORTS CLUBS)
13	SKYTOP LODGES INC	3211.240		PRIVATE (RESORTS CLUBS)
42	DEER RUN HUNTING CLUB	180.593		PRIVATE (RESORTS & CLUBS)
47	PARKSIDE ANGLING ASSOC	87.671		PRIVATE (RESORTS & CLUBS)
43	PINE LODGE HUNTING CLUB	526.240		PRIVATE (RESORTS & CLUBS)
44	OAK SPRINGS SPORTSMAN ASSOC	683.201		PRIVATE (RESORTS & CLUBS)
45	CAMP CANADENSIS	760.783		PRIVATE (RESORTS & CLUBS)
68	BRIGHT CREEK PARK ASSOC	3111.956		PRIVATE (HUNT CLUB)
14	HIAWATHA CLUB	1351.868		PRIVATE (RESORTS CLUBS)
15	MOUNT AIRY CASINO	870.748	3.65	PRIVATE (RESORTS CLUBS)
16	POCONO GARDENS	315.277		PRIVATE (RESORTS CLUBS)
17	BRODHEAD HUNT AND FISH CLUB	119.682		PRIVATE (RESORTS CLUBS)
69	BRODHEAD HUNTING & FISHING	507.469		PRIVATE (HUNT & FISH CLUB)
70	MT ALLEN HUNTING CLUB	618.290		PRIVATE (HUNT & FISH CLUB)
18	EAGLE CLAW CLUB	64.651		PRIVATE (RESORTS CLUBS)
19	MANZANEDO ROD & GUN CLUB	433.036		PRIVATE (RESORTS CLUBS)
72	PARKSIDE ANGLING ASSOC	125.263		PRIVATE (FISH CLUB)
71	BRODHEAD FLYFISHERS LLC	1058.166		PRIVATE (HUNT & FISH CLUB)
46	SPRUCE MOUNTAIN HUNT CLUB	452.687		PRIVATE (RESORTS & CLUBS)
73	EASTON ANGLERS ASSOC	1713.589		PRIVATE (FISH CLUB)

CONSERVATION OPPORTUNITIES

40	PLEASANT RIDGE HUNTING CLUB I	504.627		PRIVATE (RESORTS & CLUBS)
48	MILLER MARY ANN / TB PRICE	121.376		PRIVATE (RESIDENTIAL)
49	BARRY WILLIAM G & CHARLENE A	222.579		PRIVATE (RESIDENTIAL)
50	PRICE K EDWARD (DECEASED)	556.412		PRIVATE (RESIDENTIAL)
41	TURKEY KNOLL HUNTING CLUB	283.213		PRIVATE (RESORTS & CLUBS)
51	GEORGE STONE	328.844		PRIVATE (RESIDENTIAL)
75	PRICE DAVID	122.461		PRIVATE (RESIDENTIAL)
52	REINHART LEONARD	193.204		PRIVATE (RESIDENTIAL)
53	PRICE ALICE T	380.626		PRIVATE (RESIDENTIAL)
54	DR. BALABAN	315.158		PRIVATE (RESIDENTIAL)
55	SHOESMITH R RUCHARD	101.831		PRIVATE (RESIDENTIAL)
56	DR. BALABAN	331.015		PRIVATE (RESIDENTIAL)
57	SCOTT TIGHE / BROWNS LAKE	1018.090		PRIVATE (RESIDENTIAL)
58	DOC WEISS	684.040		PRIVATE (RESIDENTIAL)
59	ROMANO	410.756		PRIVATE (RESIDENTIAL)
60	PHIPPS HOWARD JR	721.297		PRIVATE (RESIDENTIAL)
67	GUTHRIE	43.665		PRIVATE (RESIDENTIAL)
29	MAKLA ALICE	9.803		PUBLIC (MUNICIPAL LANDS)
23	POCONO MOUNTAIN SCHOOL DISTRI	195.354		PUBLIC (MUNICIPAL LANDS)
92	STEVENS EDITH H DONALDSON	117.260		PRIVATE (RESIDENTIAL)
74	PARADISE FALLS LUTHERAN	455.096		PRIVATE (CHURCH)
63	POCONO CATHOLIC SCHOOL	32.480		PRIVATE (RESIDENTIAL)
64	DEWEY PROPERTY	307.992		PRIVATE (RESIDENTIAL)
25	ECHO FARM HUNT CLUB LLC	724.639	1.31	PUBLIC (MUNICIPAL LANDS)
65	NAUMAN RUSSELL	75.644	0.62	PRIVATE (RESIDENTIAL)
66	NAUMAN PAUL E & GLORIA L ETAL	301.836		PRIVATE (RESIDENTIAL)

LEGEND

Conserved Land	Potential Trail Heads
Unprotected Conserved Land	Railroad
Conservation Opportunities	Proposed Multi Use Trail
Threat	Proposed Trails
	Existing Trails

0 0.5 1 2 3 Miles